



**The new Honeywell Q5024 linkages enable retrofitting globe valves with Honeywell's leading direct coupled actuators (DCAs).**

These easy to install linkage and bonnet adapter combinations fit easily into most globe valve installations. Save time and money by replacing outdated electrical or pneumatic actuators with Honeywell MS and MN spring and non-spring return DCAs. When an expensive valve changeout isn't necessary, these retrofit linkages are used to modernize existing HVAC installations with high performing DCAs. This enables integration of these components with a Building Management System.

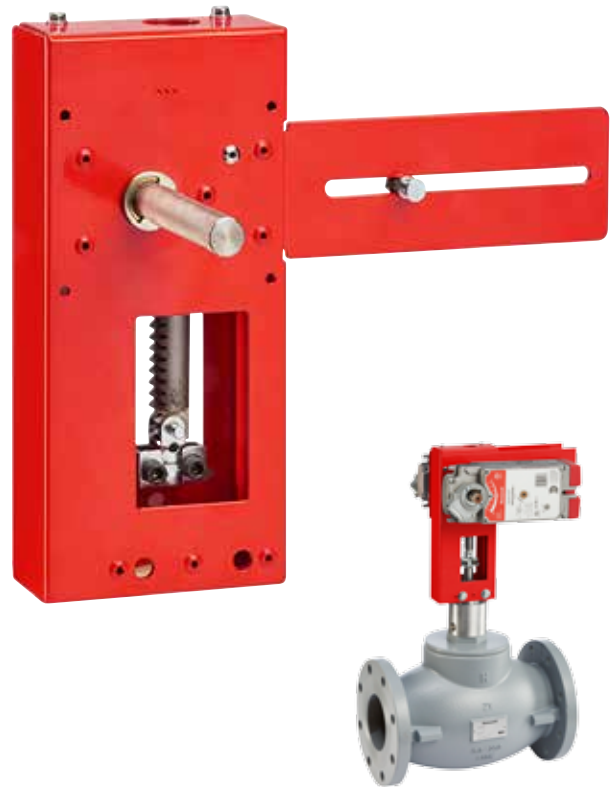
# Quick Installation, High Quality, Retrofit Solution.

Single or dual actuator linkage options with a torque range of 44-600 lb-in and wide close-off capabilities enable you to retrofit most manufacturers' globe valves.

- Solid steel design for years of reliable operation.
- Integrate modern actuators into a Building Management System to monitor and control globe valve operation.
- Quick and easy selection using the Fast Track tool.

Linkage Part #	# of Actuators	Valve Stroke
Q5024A1116	1	0.63"/16mm
Q5024A1123	1	0.91"/23mm
Q5024A1130	1	1.18"/30mm
Q5024B2230	2	1.18"/30mm
Q5024B2240	2	1.57"/40mm

For further linkage selection details, see Product Data Sheet: 38-00020



## Easy to order

Honeywell's easy-to-use Fast Track program assists with selecting and configuring your entire valve and actuator project. You can also use the Honeywell Fast Track Tool to select the correct linkage for your valve retrofits. Or, use the selection table from product data sheet 32-00020. If you do not have the exact part number or valve size, order globe valve kits that include a variety of bonnet adapters for linkage with ½" to 6" globe valves made by most manufacturers.

## Automation and Control Solutions

In the U.S.:  
Honeywell  
1985 Douglas Drive North  
Golden Valley, MN 55422-3992  
[www.honeywell.com](http://www.honeywell.com)

01-00019 PR  
January 2015  
© 2015 Honeywell International Inc. 

# Honeywell