

## Commercial Components Technical Bulletin

<b>SUBJECT: W7220-PC Mod Tool Firmware Update Procedure</b>	<b>Ref. Number</b>	
	<b>Issue Date</b>	4/3/14
	<b>Author</b>	Adrienne Thomle
<b>Suggested Model Number: W7220-PC MOD</b>	<b>Date Codes Affected: All</b>	

Follow the process steps below to update the W7220-PC MOD tool to the latest firmware version that will allow it to communicate with all versions of the W7220 JADE economizers. This firmware is free and can be downloaded at <http://customer.honeywell.com/economizertools>

1. On the Control panel on your computer open All Control Panel Items then open Program and Features Files.
2. Uninstall JADE™ Trade Configuration Tool and JADE™ OEM Configuration Tool files from your computer.
3. Go to <http://customer.honeywell.com/economizertools> and double click on the Jade PC Module software file (see figure 1) open the configuration tool file that you need – either the Trade or the OEM version.
4. Double click on the zip file to open OEM (or Trade)\_setup.exe file. It will ask you for a password which is “password”.
5. Double click on the OEM\_setup.exe. (or Trade\_setup.exe) file and click on “RUN”
6. The program will ask if you want to set up a desk top icon and if you want to Install/Remove TUSB drivers. Click on both boxes. See figure 2.
7. The program will download a new TUSB3410 driver. Note: The program will go on line and download a new version of the TUSB3410 driver.
8. Accept the license agreement.
9. The program will install the new tool firmware.
10. Accept the license agreement.
11. **When finished DO NOT LAUNCH – unclick the RUN NOW box.**
12. Click on FINISH and the program will close.
13. Connect the PC tool (connected to a Jade economizer) to your computer.
14. The new driver will install on the computer. Wait until it says “successfully installed”. This should be less than a minute.
15. Double click the icon on the desktop. See figure 3
16. Check the settings tab on the Trade version for the correct com port for the TUSB3410 driver using the following procedure (See figure 4):
  - a) Press the Windows key and the Pause key at the same time on your keyboard.
  - b) Click Device Manager that appears on the left side of the screen (if using Windows XP the systems properties window will appear; click on hardware, then device manager).
  - c) Click on “Ports” from Device Manager Window pop up.
  - d) Note the COM port for the TUSB3410. Close the Device Manager screen.
17. Go back to the program and choose the matching COM port to TUSB3410 from the Settings menu. **Make sure there is a check mark in front of the COM port on the settings menu.**

## Commercial Components Technical Bulletin

18. Click on read from JADE. A screen will appear that program has been read successfully.

### Economizer Savings Estimator

The Economizer Savings Estimator Tool has been developed using the latest ASHRAE standards.

This is a 37MB application, which has been compressed for quicker download. Save it to your computer by right-clicking the link below and selecting "Save Link As...".

[Economizer Savings Estimator \(zipped folder\)](#)

When ready, double-click the folder to unzip it and follow the setup instructions. NOTE: This tool requires the latest version of Java, which is available [here](#).

**Looking for other economizer tools? See also:**

- [Design and Application Guide for Honeywell Economizer Controls](#)
- [Jade Economizer Demo](#)
- [Jade PC Module Software](#)
- [Building codes \(click to download now\)](#)
- [W7212 Economizer Simulator \(zipped folder\)](#)
- [Technical tips for changing Economizers on site](#)

**Figure 1: Jade PC Module Software on customer.honeywell.com/economizertools website**

## Commercial Components Technical Bulletin

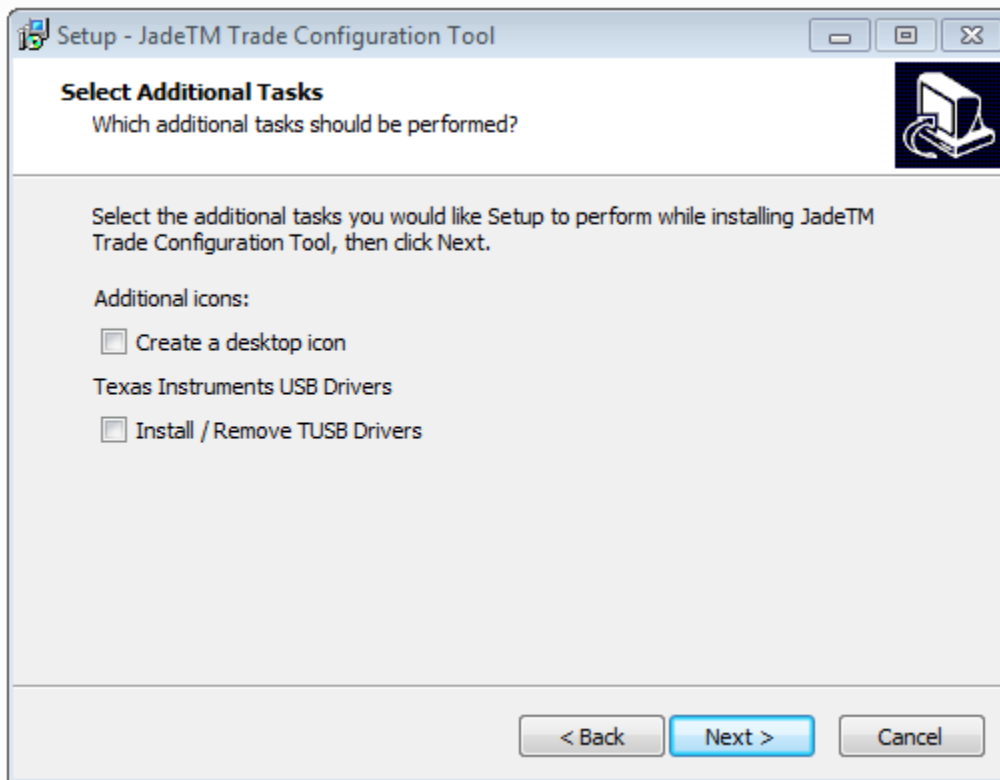


Figure 2: Setup screen

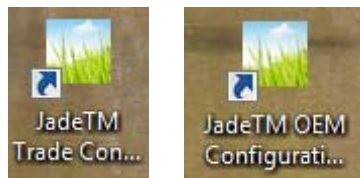


Figure 3: Examples of desktop icon

## Commercial Components Technical Bulletin

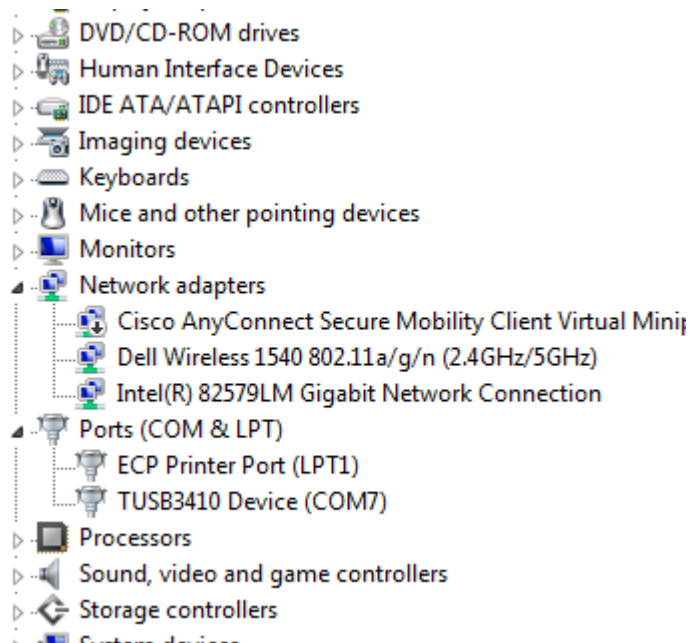


Figure 4: Example of Device Manager PORT settings