

USB-TIM Windows 8 Compatibility Instructions

Instructions Introduction

- The USB-TIM can be used with Windows 8 but there is a different driver required compared to Windows 7.
- To make the cable work, you will need to clear the old driver and install the new one.
- The following instructions should be used for Windows 8 ONLY.

Step 1

- Disable the Automatic Windows Driver Update

The image shows two screenshots from a Windows 8 desktop. The left screenshot shows the Start menu with the 'System' option circled in red and labeled 'Click Here'. A blue arrow points from the 'System' option to the right screenshot. The right screenshot shows the Control Panel 'System' page with 'Advanced system settings' highlighted by a red box and labeled 'Click Here'. A blue arrow points from the 'Advanced system settings' link back to the Start menu. A red box at the bottom left contains the text 'Right Click' with an arrow pointing to the Start button.

Programs and Features
Power Options
Event Viewer
System *Click Here*
Device Manager
Disk Management
Computer Management
Command Prompt
Command Prompt (Admin)
Task Manager
Control Panel
File Explorer
Search
Run
Desktop

Control Panel Home
Device Manager
Remote settings
System protection
Advanced system settings *Click Here*

View basic information about your computer

Windows edition
Windows 8
© 2012 Microsoft Corporation. All rights reserved.

Get more features with a new edition of Windows

System
Manufacturer: ASUSTeK COMPUTER INC.
Model: ASUS Desktop PC
Rating: **5.2** Windows 8
Processor: AMD A6-3620 AP
Graphics: 2.20 GHz

Right Click

Step 1 (Continued)

- Click on System Properties and follow allow below

The image shows two overlapping windows from the Windows operating system. The left window is titled "System Properties" and has tabs for "Computer Name", "Hardware", "Advanced", "System Protection", and "Remote". The "Hardware" tab is selected and circled in red with a red "1" next to it. Below the tabs, there is a "Device Manager" section with a description and a "Device Manager" button. Below that is the "Device Installation Settings" section with a description and a "Device Installation Settings" button circled in red with a red "2" next to it. The right window is titled "Device Installation Settings" and contains the question "Do you want Windows to download driver software and realistic icons for devices?". There are four radio button options: "Yes, do this automatically (recommended)", "No, let me choose what to do" (circled in red with a red "3" next to it), "Always install the best driver software from Windows Update.", and "Never install driver software from Windows Update." (circled in red with a red "4" next to it). There is also a checked checkbox for "Automatically get the device app and info provided by your device manufacturer". At the bottom of the right window, there is a link "Why should I have Windows do this automatically?" and a "Save Changes" button circled in red with a red "5" next to it.

System Properties

Computer Name Hardware Advanced System Protection Remote

1

Device Manager

The Device Manager lists all the hardware devices installed on your computer. Use the Device Manager to change the properties of any device.

Device Manager

Device Installation Settings

Choose whether Windows downloads driver software for your devices and detailed information about them.

2

Device Installation Settings

Device Installation Settings

Do you want Windows to download driver software and realistic icons for devices?

Yes, do this automatically (recommended)

No, let me choose what to do 3

Always install the best driver software from Windows Update.

Never install driver software from Windows Update. 4

Automatically get the device app and info provided by your device manufacturer

[Why should I have Windows do this automatically?](#)

5

Save Changes

Step 2

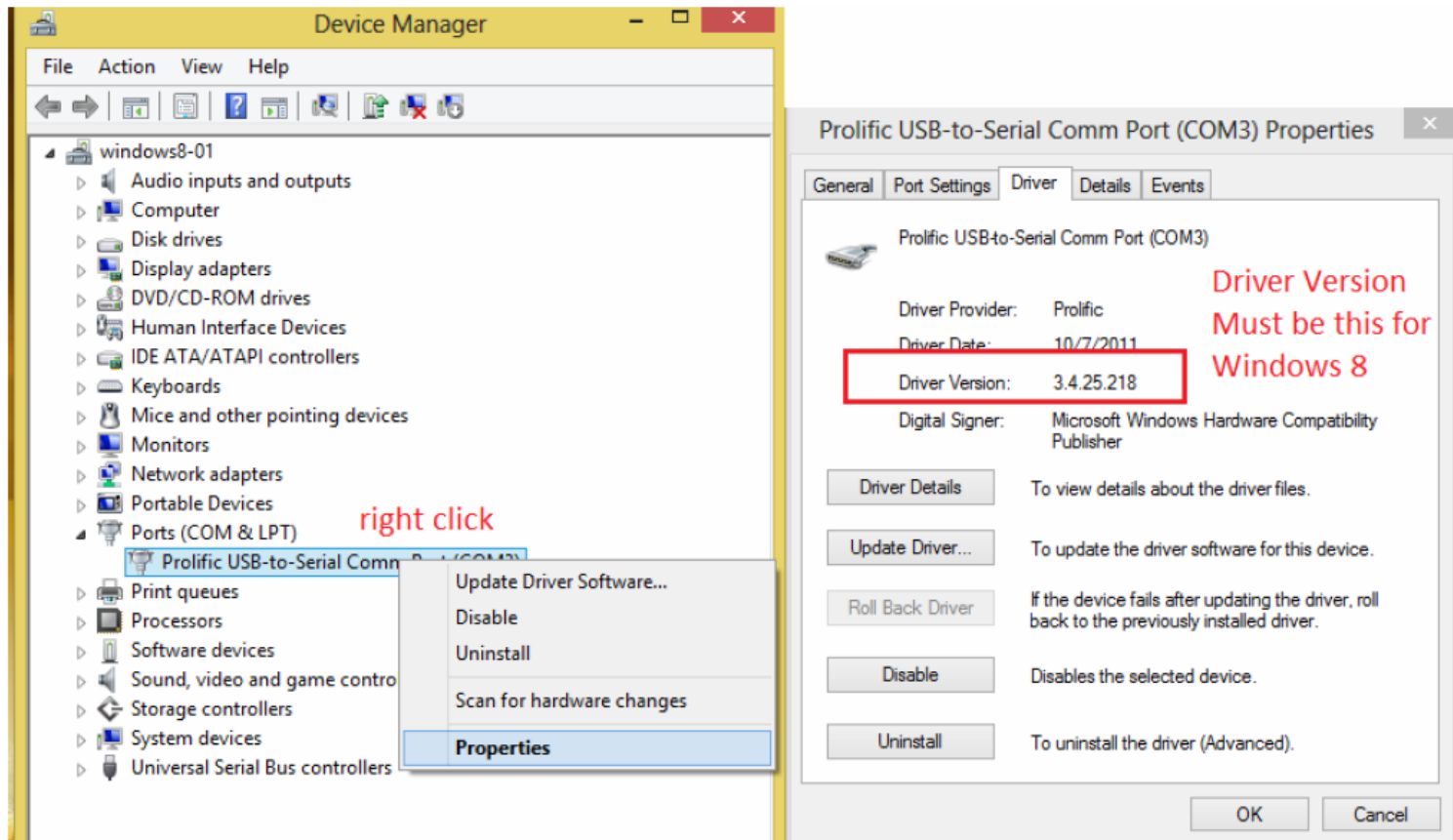
- Connect the cable to the PC and open the Device Manager.
- Note the status and version of the Driver



Right Click

Step 2 (Continued)

- Driver Version 3.4.25.218 is correct for Windows 8, if this is shown **no more actions are needed**.

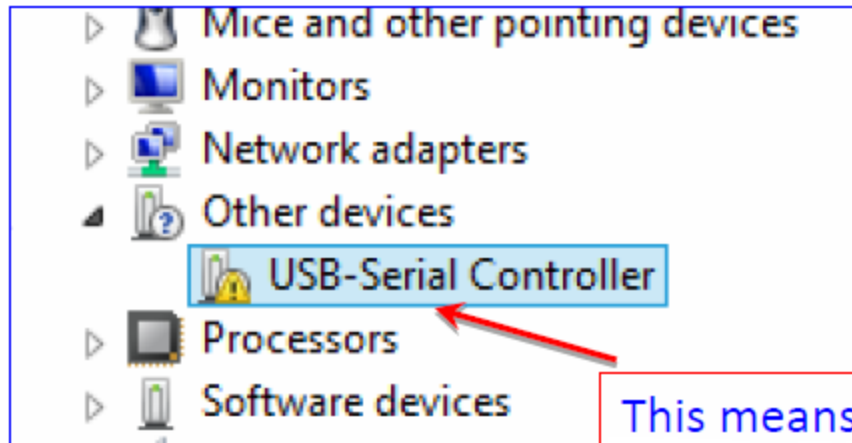


Step 2 (Continued)

- When the driver description below appears, no driver is installed
- Proceed to Step 3



Right Click



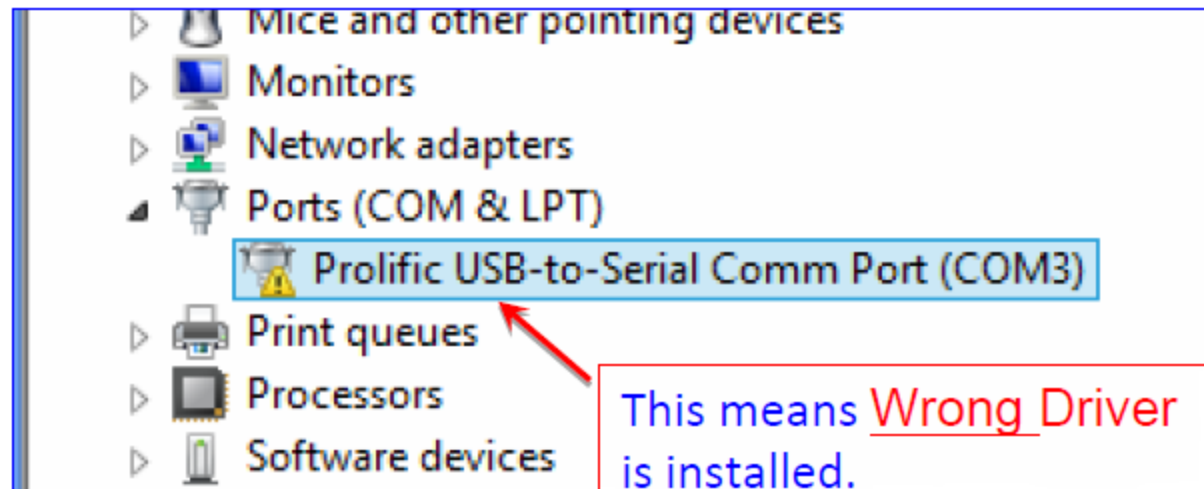
This means NO Driver is installed

Step 2 (Continued)

- When the driver description below appears, the wrong driver is installed.
- Proceed to Step 4



Right Click



This means Wrong Driver is installed.

Step 3 (No Driver)

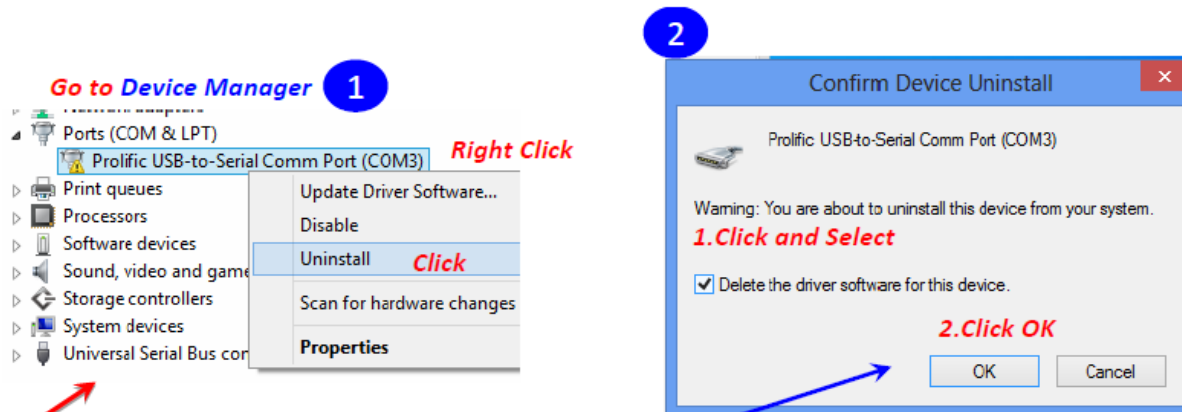
- Disconnect the USB-TIM cable
- If not already done in Step 1, disable the Windows Automatic Driver Update
- Download and run the following file from customer.honeywell.com :
USB-TIM_DriverInstaller_v1.5.0
- Upon completion check to make sure the installation was done correctly by repeating Step 2.
- If the version is correct, **no more actions are needed.**

Step 4 (Wrong Driver)

- Keep the USB-TIM cable connected
- If not already done in Step 1, disable the Windows Automatic Driver Update
- Uninstall the current driver from the Device Manager (see next slide)

Step 4 (Wrong Driver - Continued)

- Uninstall Instructions



3 After Finishing Step 2, Uninstallation will start and finish. Then disconnect the Cable

4 Restart Your PC

5 Open Device Manager and connect the Cable. You will see notification like this. Instead, if you still see "Prolific USB-to-Serial Comm Port" with yellow mark ⚠ (just like in Step 1 above) then **Disable** Automatic Driver Update. Follow from Step 1.

Uninstalled Successfully



Step 4 (Wrong Driver - Continued)

- Once the driver was successfully uninstalled, disconnect the USB-TIM cable
- If not already done in Step 1, disable the Windows Automatic Driver Update
- Download and run the following file from customer.honeywell.com :
USB-TIM_DriverInstaller_v1.5.0
- Upon completion check to make sure the installation was done correctly by repeating Step 2.
- If the version is correct, **no more actions are needed.**